

SW Testing Services Limited



QF DUCT

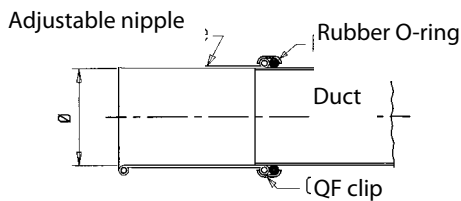
Manufactured from long-seamed galvanised mild steel sheets and available in two different lengths.



E.g.: 20002.250
 Type _____
 Diameter (Ø) _____

Type	Length in mm (L)	Diameter (Ø)												
20001	1000	100	125	140	160	180	200	250	315	350	400	450	500	
20002	2000													

Slip ducts

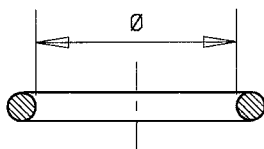


Galvanised mild steel.

E.g.: 20000.250
 Type _____
 Diameter (Ø) _____

Type	Length in mm (L)	Diameter (Ø)												
20000	300	100	125	140	160	180	200	250	315	350	400	450	500	

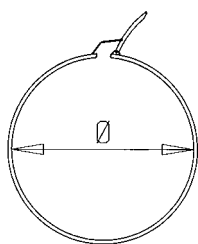
Rubber O-ring



E.g.: 30106.250
 Type _____
 Diameter (Ø) _____

Type	Diameter (Ø)												
30106	100	125	140	160	180	200	250	315	350	400	450	500	

QF clips

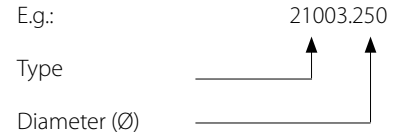


Two types of galvanised QF clips. Type 30100. XXX with galvanised clamp (see figure). Type 30109. XXX with a bolt.

E.g.: 30100.250
 Type _____
 Diameter (Ø) _____

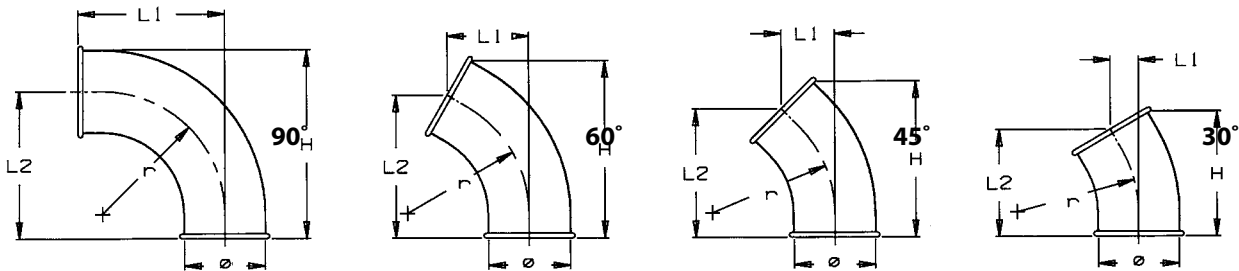
Type	Diameter (Ø)												
30100	100	125	140	160	180	200	250	315	350	400	450	500	
30109													

Pressed or segmented galvanised mild steel bends.



Type	Angle	Diameter (Ø)													
21003	30°	100	125	140	160	180	200	250	315	350	400	450	500		
21004	45°														
21006	60°														
21009	90°														

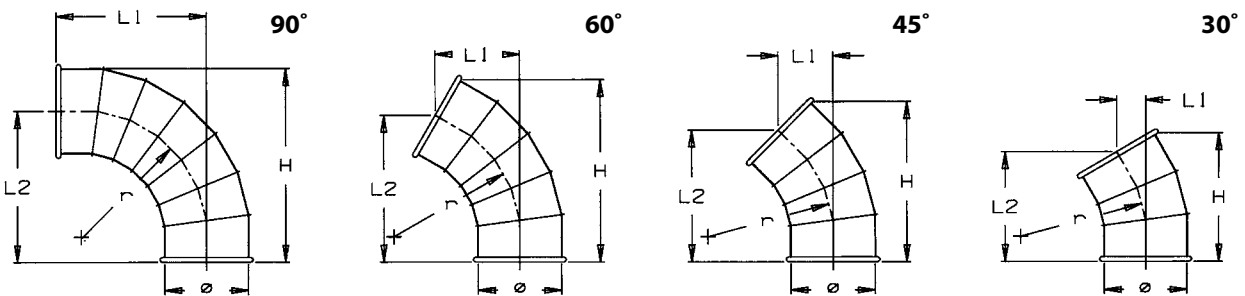
Pressed bends



Dimensions (all dimensions in mm) $r = 1 \times \text{Ø}$

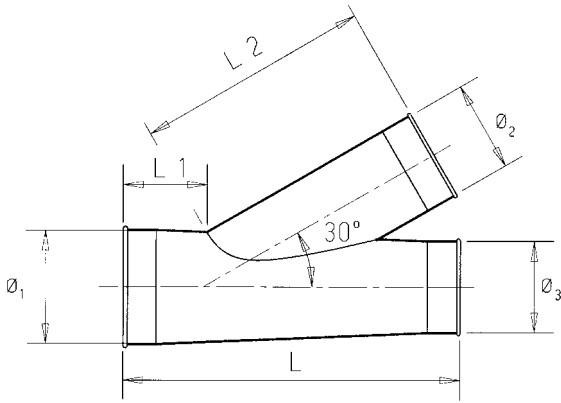
90°					60°					45°					30°				
Ø	r	L1	L2	H	Ø	r	L1	L2	H	Ø	r	L1	L2	H	Ø	r	L1	L2	H
100	100	130	130	180	100	100	95	165	210	100	100	50	125	165	100	100	30	105	135
125	125	158	158	220	125	125	100	185	235	125	125	55	140	185	125	125	30	125	150
140	140	165	165	235	140	140	90	190	250	140	140	60	150	190	140	140	35	130	160
160	160	190	190	270	160	160	105	215	290	160	160	65	160	215	160	160	35	135	170
180	180	205	205	295	180	180	110	230	315	180	180	70	170	235	180	180	35	145	185

Segmented long radius bends



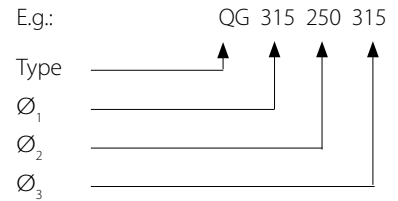
Dimensions (all dimensions in mm) $r = 1.5 \times \text{Ø}$

90°					60°					45°					30°				
Ø	r	L1	L2	H	Ø	r	L1	L2	H	Ø	r	L1	L2	H	Ø	r	L1	L2	H
200	300	405	405	518	200	300	225	410	500	200	300	155	360	430	200	300	65	300	350
250	375	438	438	550	250	375	260	410	510	250	375	160	370	460	250	375	70	310	380
315	472	548	548	705	315	472	270	500	630	315	472	180	415	525	315	472	80	340	420
350	525	595	595	770	350	525	295	540	700	350	525	190	455	580	350	525	90	365	450
400	600	655	655	855	400	600	310	585	760	400	600	195	510	650	400	600	95	385	490
450	675	730	730	955	450	675	345	640	840	450	675	200	540	690	450	675	100	395	505
500	750	790	790	1040	500	750	380	680	895	500	750	205	595	745	500	750	105	410	535



pprox. $2 \times \varnothing_2 + 120$ mm
 pprox. 100 mm
 pprox. $1.7 \times \varnothing_2 + 120$ mm

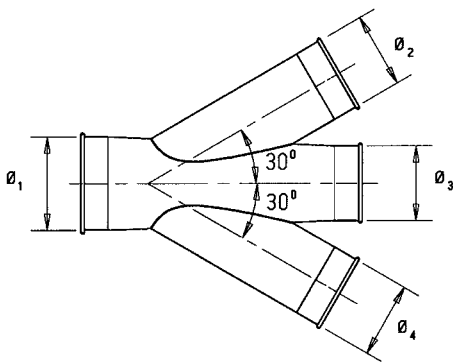
Galvanised mild steel branch. \varnothing_2 and \varnothing_3 are always equal to or smaller than \varnothing_1 .



= Possible variants

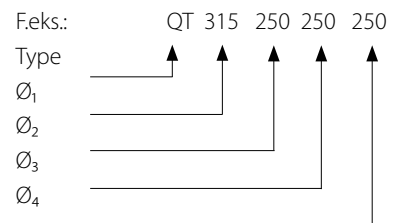
\varnothing_1	Diameter $\varnothing_2 / \varnothing_3$											
	100	125	140	160	180	200	250	315	350	400	450	500
100	■											
125	■	■										
140	■	■	■									
160	■	■	■	■								
180	■	■	■	■	■							
200	■	■	■	■	■	■						
250	■	■	■	■	■	■	■					
315	■	■	■	■	■	■	■	■				
350	■	■	■	■	■	■	■	■	■			
400	■	■	■	■	■	■	■	■	■	■		
450	■	■	■	■	■	■	■	■	■	■	■	
500	■	■	■	■	■	■	■	■	■	■	■	■

Double branch



The length of the double branch is dependent on the diameter.

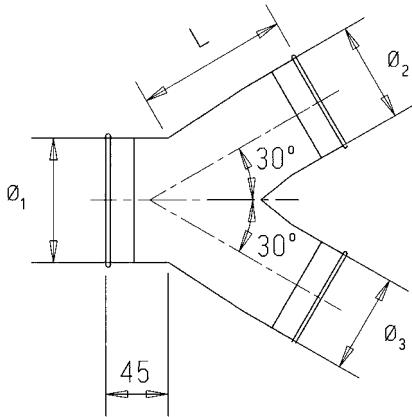
Galvanised mild steel double branch. $\varnothing_2, \varnothing_3$ and \varnothing_4 are always equal to or smaller than \varnothing_1 .



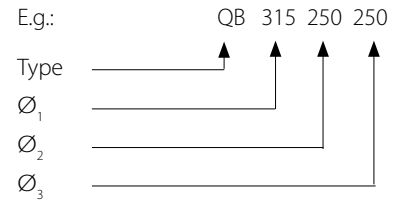
= Possible variants

\varnothing_1	Diameter $\varnothing_2 / \varnothing_3 / \varnothing_4$											
	100	125	140	160	180	200	250	315	350	400	450	500
100	■											
125	■	■										
140	■	■	■									
160	■	■	■	■								
180	■	■	■	■	■							
200	■	■	■	■	■	■						
250	■	■	■	■	■	■	■					
315	■	■	■	■	■	■	■	■				
350	■	■	■	■	■	■	■	■	■			
400	■	■	■	■	■	■	■	■	■	■		
450	■	■	■	■	■	■	■	■	■	■	■	
500	■	■	■	■	■	■	■	■	■	■	■	■

Y branch



Galvanised mild steel Y branch. \varnothing_2 and \varnothing_3 are always equal to or smaller than \varnothing_1 .

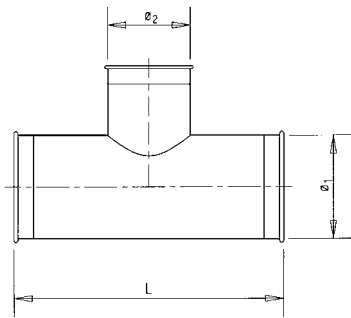


$L = \varnothing_1 + 100 \text{ mm}$

= Possible variants

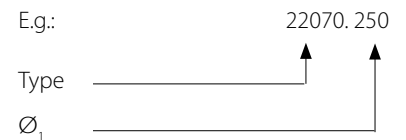
\varnothing_1	Diameter $\varnothing_2 / \varnothing_3$											
	100	125	140	160	180	200	250	315	350	400	450	500
100	■											
125	■	■										
140	■	■	■									
160	■	■	■	■								
180	■	■	■	■	■							
200	■	■	■	■	■	■						
250	■	■	■	■	■	■	■					
315	■	■	■	■	■	■	■	■				
350	■	■	■	■	■	■	■	■	■			
400	■	■	■	■	■	■	■	■	■	■		
450	■	■	■	■	■	■	■	■	■	■	■	
500	■	■	■	■	■	■	■	■	■	■	■	■

T branch



Galvanised T branch.

\varnothing_1 to \varnothing_1 must be the same dimension, however, \varnothing_2 has to be equal to or smaller than \varnothing_1 . Please specify diameter \varnothing_2 .

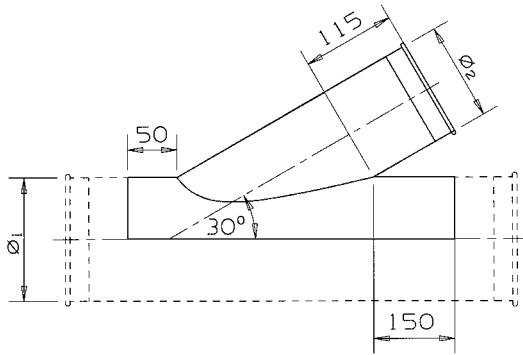


$L = \varnothing_2 + 2 \times 150 \text{ mm}$

= Possible variants

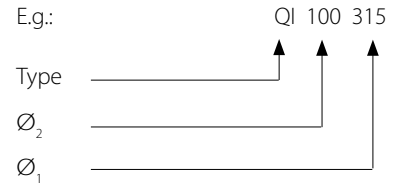
\varnothing_1	Diameter \varnothing_2											
	100	125	140	160	180	200	250	315	350	400	450	500
100	■											
125	■	■										
140	■	■	■									
160	■	■	■	■								
180	■	■	■	■	■							
200	■	■	■	■	■	■						
250	■	■	■	■	■	■	■					
315	■	■	■	■	■	■	■	■				
350	■	■	■	■	■	■	■	■	■			
400	■	■	■	■	■	■	■	■	■	■		
450	■	■	■	■	■	■	■	■	■	■	■	
500	■	■	■	■	■	■	■	■	■	■	■	■

Cut-in branch



Galvanised mild steel.

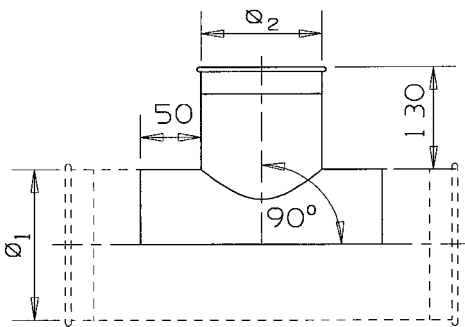
Ø_2 is always equal to or smaller than Ø_1 .



= Possible variants

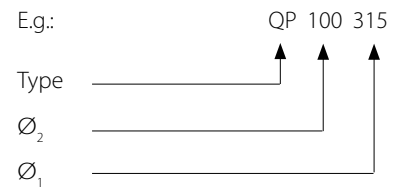
	Diameter Ø_2											
Ø_1	100	125	140	160	180	200	250	315	350	400	450	500
100	■											
125	■	■										
140	■	■	■									
160	■	■	■	■								
180	■	■	■	■	■							
200	■	■	■	■	■	■						
250	■	■	■	■	■	■	■					
315	■	■	■	■	■	■	■	■				
350	■	■	■	■	■	■	■	■	■			
400	■	■	■	■	■	■	■	■	■	■		
450	■	■	■	■	■	■	■	■	■	■	■	
500	■	■	■	■	■	■	■	■	■	■	■	■

Cut-in T branch



Galvanised mild steel.

Ø_2 is always equal to or smaller than Ø_1 .

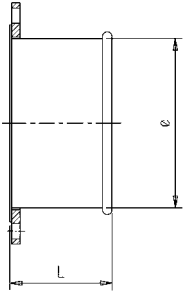


$L = \text{Ø}_2 + 100 \text{ mm}$

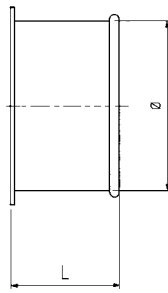
= Possible variants

	Diameter Ø_2											
Ø_1	100	125	140	160	180	200	250	315	350	400	450	500
100	■											
125	■	■										
140	■	■	■									
160	■	■	■	■								
180	■	■	■	■	■							
200	■	■	■	■	■	■						
250	■	■	■	■	■	■	■					
315	■	■	■	■	■	■	■	■				
350	■	■	■	■	■	■	■	■	■			
400	■	■	■	■	■	■	■	■	■	■		
450	■	■	■	■	■	■	■	■	■	■	■	
500	■	■	■	■	■	■	■	■	■	■	■	■

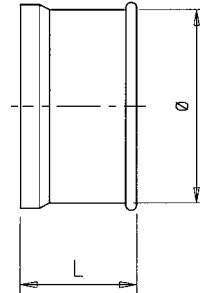
Galvanised mild steel. Used for adjustment of the QF duct system to non-QF duct systems or to machines.



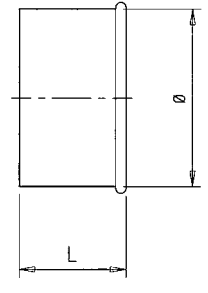
22007
QF adapter with flange.
L = 50 mm.



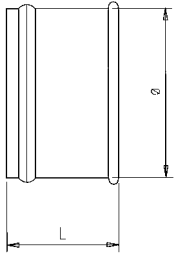
22008
QF adapter for tubular rivets.
L = 46 mm.



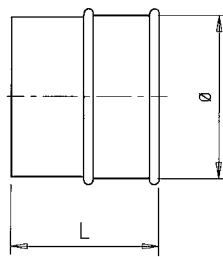
22009
QF adapter with stepedge.
L = 58 mm.



22010
QF smooth adapter.
L = 58 mm.



22013
QF hose adapter.
L = 58 mm.

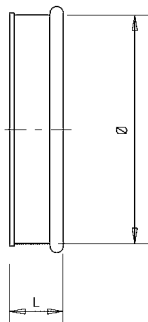


22014
QF adapter for spiro.
L = 58 mm (for dia. 100-180).
L = 116 mm (for dia. 200-500).

E.g.: 22010.250
Type ↑
Diameter (Ø) ↑

Type	Diameter (Ø)											
22007												
22008												
22009												
22010	100	125	140	160	180	200	250	315	350	400	450	500
22013												
22014												

End cap

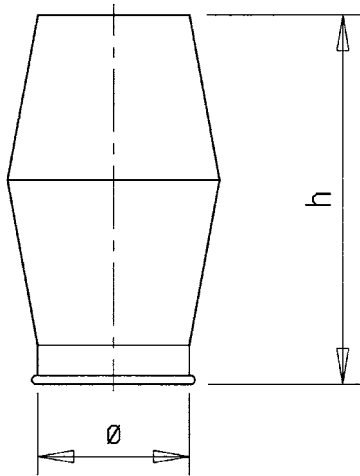


L = 50 mm

Galvanised mild steel.

E.g.: 22012.250
Type ↑
Diameter (Ø) ↑

Type	Diameter (Ø)											
22012	100	125	140	160	180	200	250	315	350	400	450	500



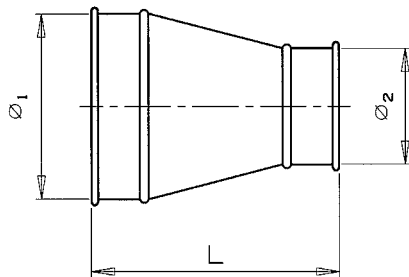
$$h = (2 \times \text{Ø}) + 100 \text{ mm}$$

Galvanised mild steel.

E.g.: 23000.250
 Type
 Diameter (Ø)

Type	Diameter (Ø)												
23000	100	125	140	160	180	200	250	315	350	400	450	500	

Reducer



$$L = (\text{Ø}_1 - \text{Ø}_2) + 50 + (2 \times 58) \text{ mm}$$

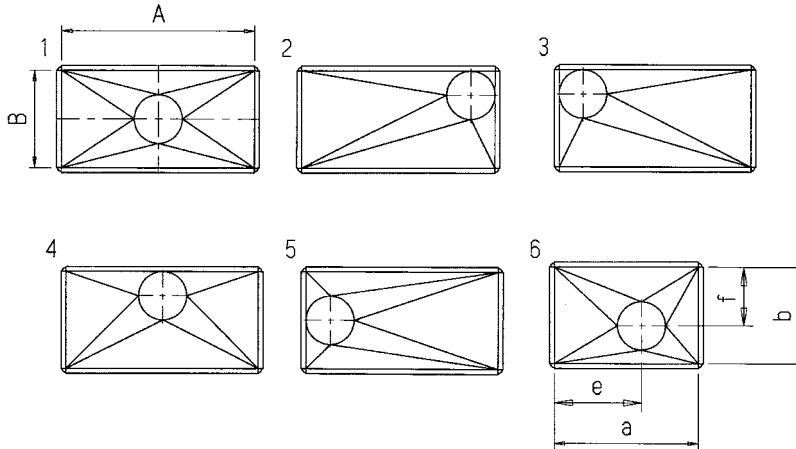
Galvanised mild steel.

E.g.: QR 315 100
 Type
 Ø₁
 Ø₂

= Possible variants

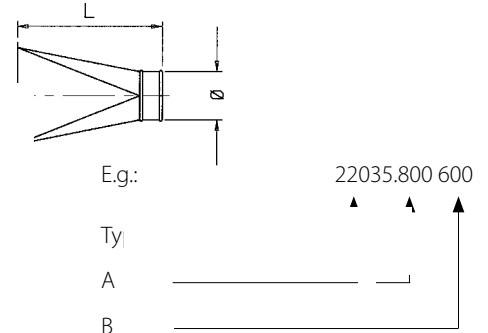
Ø ₁	Diameter Ø ₂												
	100	125	140	160	180	200	250	315	350	400	450	500	
125													
140													
160													
180													
200													
250													
315													
350													
400													
450													
500													

Galvanised mild steel rectangular to round transition with flange. Also available without flange on enquiry. The different positions of the round end of the transition can be seen from the drawing.



Please specify:

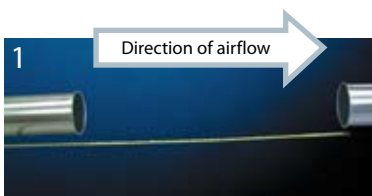
- The actual A, B, and \varnothing dimensions.
- The position of the connection spigot.
- The type of connection spigot (QF, spiro, or raw end).



= Possible variants. The A and B dimensions are max. dimensions.

Type	A	B											
		100	150	200	250	300	350	400	450	500	600	700	800
22035	100												
	150												
	200												
	250												
	300												
	350												
	400												
	450												
	500												
	600												
700													
800													

Installation



1 Measure distance to be spanned.



2 Mark distance to be spanned less 100 mm.



3 Use O-ring provided and mark for cut.



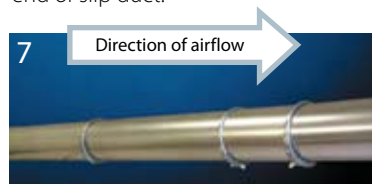
4 Cut the duct.



5 Put O-ring on cut duct, slide slip duct over cut piece of duct.

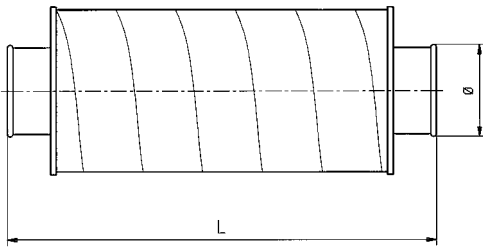


6 Snap QF clamp over O-ring and one end of slip duct.



7 Finished connection with the slip duct.

Silencer



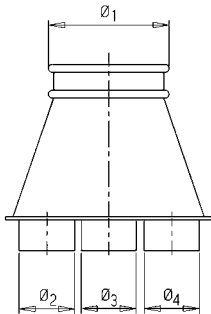
L = 1000 mm

Galvanised mild steel.

E.g.: 23041.250
 Type _____
 Diameter (Ø) _____

Type	Diameter (Ø)												
23041	100	125	140	160	180	200	250	315	350	400	450	500	

Suction hood

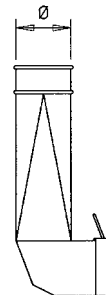


Galvanised mild steel. The number of connections varies from 2 to 8 pcs. Please specify the diameter and the connection type of the connections.

E.g.: 23012. 3 250
 Type _____
 Number of connections _____
 Ø₁ _____

Type	No. of connections	Diameter (Ø ₁)												
23012	2, 3, 4, 5, 6, 7, 8	100	125	140	160	180	200	250	315	350	400	450	500	

Floor sweep

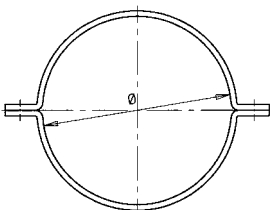


Galvanised mild steel.

E.g.: 23011.125
 Type _____
 Diameter (Ø) _____

Type	Diameter (Ø)					
23011	100	125	140	160	180	

Split strap

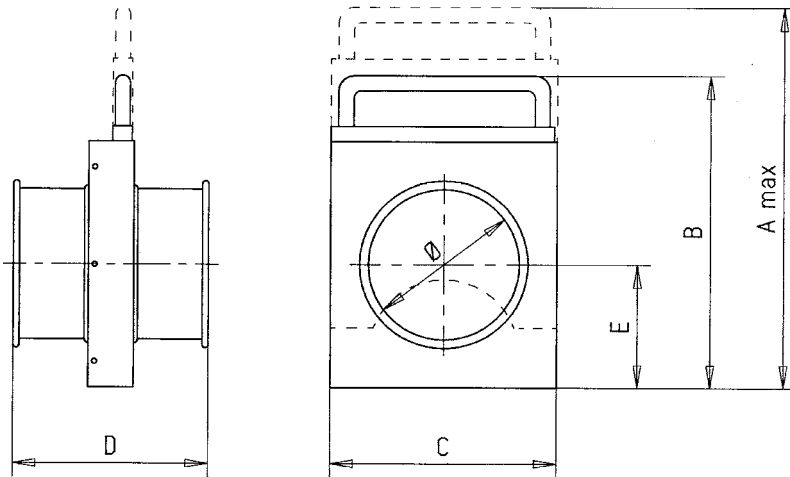


Galvanised mild steel.

E.g.: 30940.250
 Type _____
 Diameter (Ø) _____

Type	Diameter (Ø)												
30940	100	125	140	160	180	200	250	315	350	400	450	500	

Manual energy saving damper



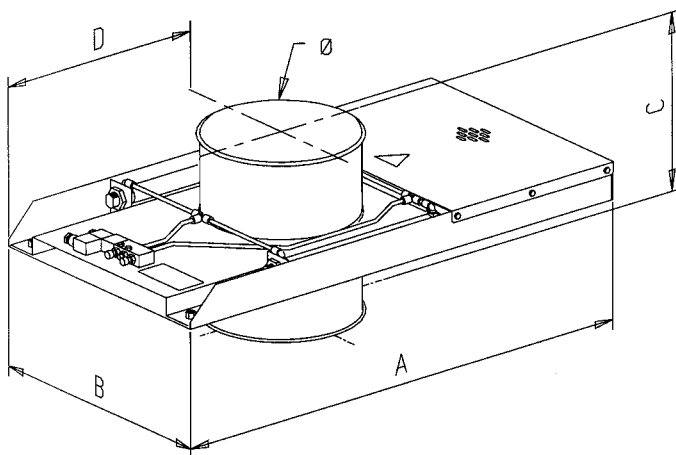
Manually operated.
 These compact and easy-to-operate dampers are made from galvanised mild steel and have a special sealing device which ensures low friction and optimum tightness.

E.g.: 23075. 250
 Type
 Diameter (Ø)

Dimensions (all dimensions in mm)

NFMES	Diameter (Ø)									
	100	125	140	160	180	200	250	315	350	400
A max.	329	382	412	462	501	543	653	793	860	975
B	208	233	248	287	298	318	378	453	500	560
C	150	175	190	220	240	260	320	395	430	480
D	125	125	125	125	125	125	125	125	120	120
E	82	94	102	117	127	137	167	204	225	255

Automatic energy saving damper



The automatic energy saving damper is driven by double acting compressed air cylinders.

The automatic energy saving damper is made from galvanised mild steel and equipped with a special sealing device which ensures low friction and optimal air tightness.

E.g.: 23073. 250
 Type
 Diameter (Ø)

Dimensions (all dimensions in mm)

NFMES	Diameter (Ø)											
	One cylinder						Two cylinders					
A	405	445	480	520	560	650	840	970	1040	1140	1240	1340
B	160	190	200	220	240	260	441	506	541	591	641	691
C	125	125	125	125	125	125	300	300	300	300	300	300
D	130	152	160	175	185	210	360	392	410	435	460	485